

## Guided Implant Surgery with Simultaneous Connective Tissue Grafting in the Premolar Region



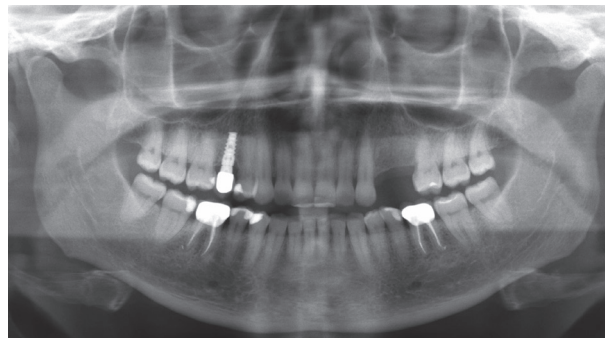
Dr. Stijn Kregting,  
Centrum Implantologie  
Castricum, Netherlands  
[www.cicastricum.nl](http://www.cicastricum.nl)



### The Baseline Situation

#### Patient with two missing premolars

A 45-year-old healthy female patient with good dental hygiene presented at the dental office for implant therapy. **Premolars 24 and 25 had been extracted five years earlier** due to endodontic failure and a vertical tooth fracture.



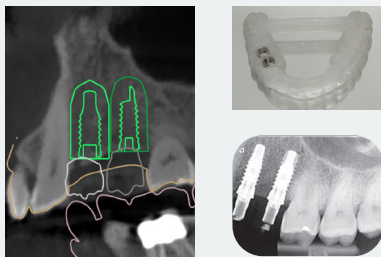
Clinical and radiological assessments confirmed the presence of adequate vertical and horizontal bone volume

### The Treatment Strategy



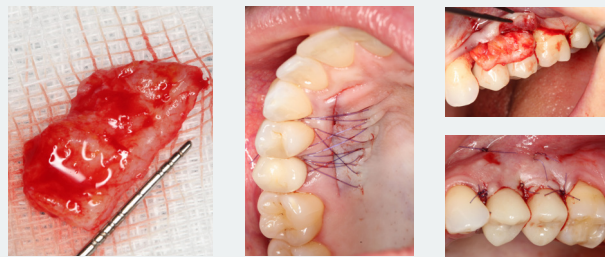
#### 1. Guided surgery

Fully guided insertion of two SPI®ELEMENT RC INICELL® Implants (PF 4.0, L 11 mm) followed by immediate restoration



#### 2. Subepithelial tissue graft

For mucosa thickening and papilla restoration, a connective tissue graft (6x14 mm) harvested from the palate (Regio 14-15) was placed and secured with mattress sutures during initial surgery



#### 3. Monolithic zirconia crowns

Loading of the implants with the final restoration after 4 months of healing



### The Outcome

After four months, both implants had successfully osseointegrated with healthy soft tissue around the implants. The final zirconia restorations yielded satisfactory esthetic results

